

KOMATSU

PRELIMINARY

PC
88MR

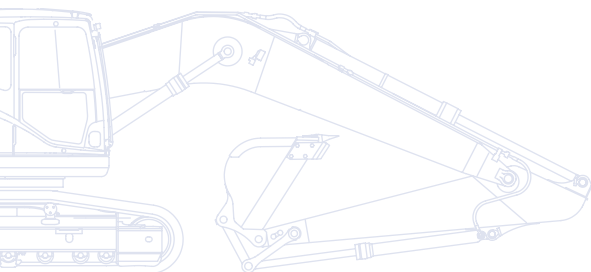


Hydraulic Excavator **PC88MR-10**

ENGINE POWER
50,7 kW / 68 HP @ 1.950 rpm

OPERATING WEIGHT
8.500 - 8.750 kg

BUCKET CAPACITY
0,09 - 0,34 m³



First-class operator comfort

- Spacious and comfortable cab with multi-position controls
- Quiet and ergonomic working environment
- Large multifunction colour monitor
- Sliding door for easy entry and exit
- Automatic air conditioner
- Details like new auxiliary input (MP3 jack) further improve operator convenience

Powerful and environmentally friendly

- Low consumption EU Stage IIIB engine
- New fuel-saving engine and hydraulic technology
- 6 selectable working modes
- Auto-deceleration and eco-gauge for a lower fuel usage
- Low operating noise levels



Total versatility

- Proportional control on joystick for auxiliary circuits
- Hydraulic pump oil flow adjustable on the monitor
- Standard hammer line
- Second auxiliary circuit and hydraulic quick-coupler line (optional)
- Road liner (optional)

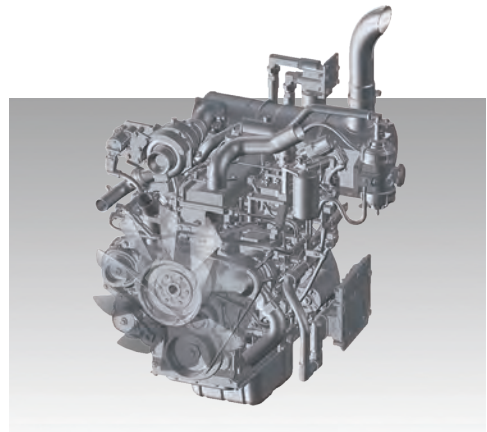
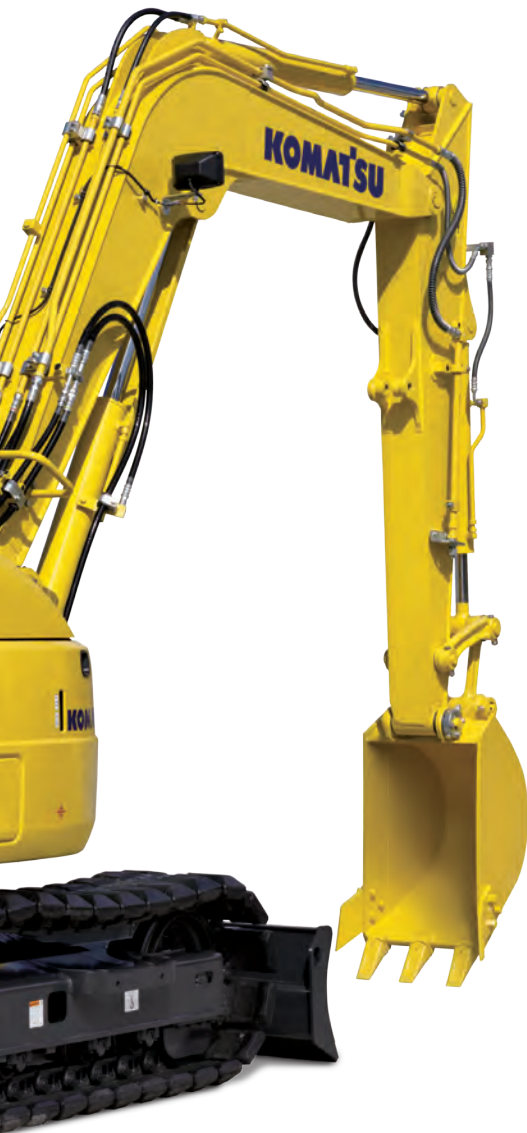
KOMTRAX

Komatsu Wireless
Monitoring System



Outstanding performances

- Fast and precise movements
- Large drawbar pull
- Excellent controllability
- 2 automatic travel speeds
- CLSS hydraulic system



New Komatsu SAA4D95LE-6 engine fully complies with EU Stage IIIB, providing high levels of performance and efficiency in all applications.



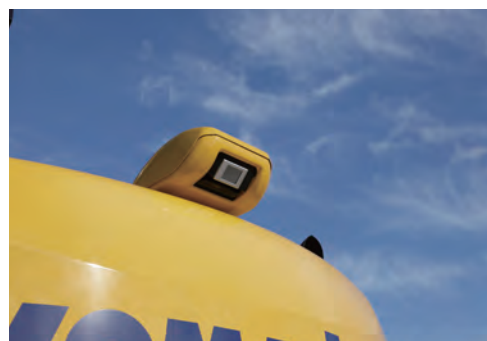
The ECO-gauge, the new fuel consumption gauge, idle caution and auto idle stop function all assist to further reduce fuel consumption.



Improvements in the main valve and hydraulic circuit reduce hydraulic loss, resulting in higher efficiency and lower fuel consumption.

Easy maintenance

- Optimal maintenance layout
- Side-by-side coolers
- Equipment Management and Monitoring System (EMMS)
- Standard fuel pre-filter with water separator
- Long maintenance intervals
- New fan belt auto-tensioner



New rear-view camera system further improves safety (option)

Hydraulic Excavator

PC88MR-10

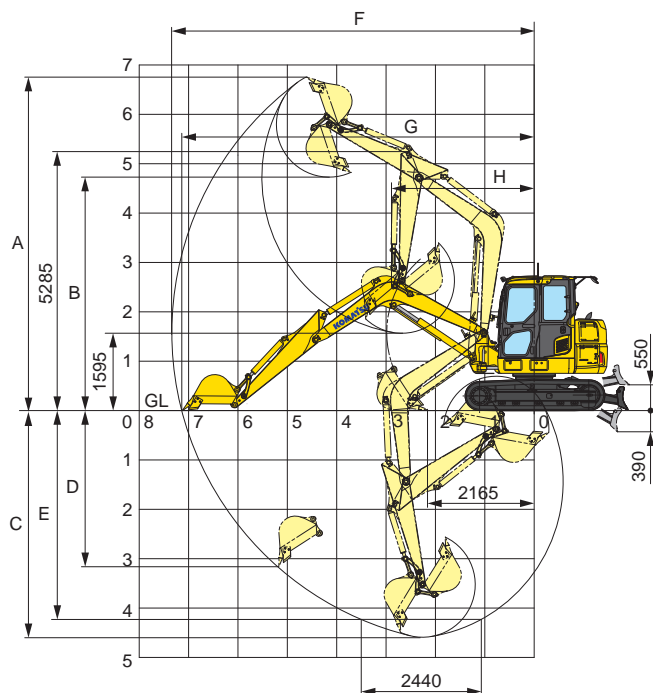
ENGINE

Model Komatsu SAA4D95LE-6
 Type Common rail direct injection, water-cooled, emissionised, turbocharged, after-cooled diesel
 Displacement 3.260 cm³
 Bore × stroke 95 mm × 115 mm
 No. of cylinders 4
 Engine power
 at engine speed 1.950 rpm
 ISO 14396 50,7 kW / 68,0 HP
 SAE J1349 49,0 kW / 65,7 HP
 Engine emissions Fully complies with EU Stage IIIB exhaust emission regulations

UNDERCARRIAGE

Construction X-frame centre section with box section track frames
 Track assembly
 Type Fully sealed
 Shoes (each side) 39
 Tension Combined spring and hydraulic unit
 Rollers
 Track rollers (each side) 5
 Carrier rollers (each side) 1

WORKING RANGE



HYDRAULIC SYSTEM

Type HydrauMind. Closed-centre system with load sensing and pressure compensation valves
 Main pumps:
 Pump for boom, arm, bucket and travelling
 Type variable displacement, axial piston
 Max. flow 160 ltr/min
 Pump for swing and blade
 Type fixed displacement gear pump
 Max. flow 70 ltr/min
 Hydraulic motors:
 Travel 2 × piston motor with parking brake
 Swing 1 × piston motor with swing holding brake
 Relief valve setting:
 Swing and blade 21,1 MPa (215 kg/cm²)
 Travel and work equipment 26,5 MPa (270 kg/cm²)

DRIVES AND BRAKES

Steering control 2 levers with pedals
 Transmission hydrostatic
 Hydraulic motors variable displacement, axial piston
 Max. drawbar pull 66,9 kN (6.820 kgf)
 Max. travel speeds Lo / Hi 2,9 km/h - 5,1 km/h
 Service brake hydraulic lock
 Parking brake mechanical discs

ARM LENGTH		2,1 m
A	Max. digging height	6.800 mm
B	Max. dumping height	4.770 mm
C	Max. digging depth	4.565 mm
D	Max. vertical wall digging depth	3.115 mm
E	Max. digging depth of cut for 2,44 m level	4.200 mm
F	Max. digging reach	7.345 mm
G	Max. digging reach at ground level	7.135 mm
H	Min. swing radius	2.900 mm

OPERATING WEIGHT

Operating weight, including mono boom, 2,1 m arm, 0,20 m³ bucket (ISO 7451), blade, operator, liquids, filled tank and standard equipment (ISO 6016).

Shoes	Operating weight	Ground pressure
450 mm Road liner	8.720 kg	0.39 kg/cm ²
450 mm Triple grouser	8.580 kg	0.39 kg/cm ²
600 mm Triple grouser	8.750 kg	0.30 kg/cm ²
450 mm Rubber shoe	8.500 kg	0.38 kg/cm ²